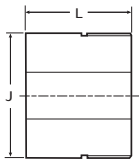


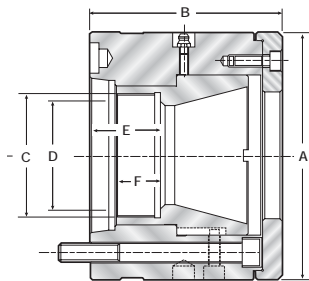
Short Length CDC Collet Chuck



- Dead length operation
- Ideal for bar work with minimum working envelope
- Accepts Crawford Multibore Collets only
- A type spindle mountings



Drawtube
Adapter



Multibore
Collet

Chuck Type	CDC-42S	CDC-54S	CDC-54S	CDC-66S
Chuck Model No.	F325	F757	F327	F941
Mount	A2-5	A2-5	A2-6	A2-6
Multibore Collet	W-850	V-120	V-120	T-285
Capacity Round	42	54	54	66
Capacity Hex	38	51	51	57
Capacity Square	31	41	41	44
A	116	142	142	170
B	98	113	129	131
C	M68 x 1.5	M70 x 1.5	M70 x 2.0	M85 x 2.0
D*	60	52	62	75
E	34 - 43	31 - 41	48 - 58	48 - 58
F	18	15	20	30
J	65	55	83	96
Maximum RPM	6000	6000	6000	5000
Drawbar Force (kN)	24	38	38	38
Clamping Force (kg)	5987	10070	10070	10070
Aprox. Chuck Weight	7kg	10kg	12kg	17kg

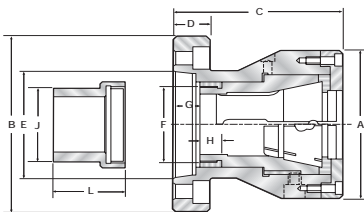
*Note: 'D' represents the maximum drawtube thread diameter in conjunction with a drawtube adapter.

Standard Length CDC Collet Chucks

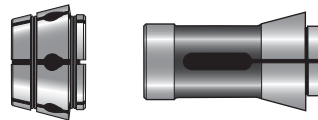
Dead length operation using Crawford Multibore and Spring Collets with A type mounts



- Uses Crawford Multibore collets for a powerful parallel grip over a wide diameter range
- When gripping short components, or where marking of a finished diameter is to be avoided, use a spring collet with a dedicated bore size
- Large Capacity: up to 80mm diameter.
- Accuracy guaranteed to .005mm TIR from rear mounting register and working collet taper
- Hardened and ground main body and cone
- Also available in DIN 6353 straight recess mountings



Drawtube Adapter



Multibore Collet Spring Collet

Chuck Type	CDC-42	CDC-42	CDC-54	CDC-54	CDC-66	CDC-80
Chuck Model No.	J449	J434	J487	J488	J489	J490
Mount	A2-5	A2-6	A2-6	A2-8	A2-8	A2-8
Std Multibore Collet	W850	W850	V120	V120	T285	N175
Capacity, Round	42	42	54	54	66	80
Capacity Hex	38	38	51	51	57	69
Capacity Square	31	31	41	41	44	56
Spring Collet	M286	M286	N853	N853	K244	L196
Capacity Round	38.5	38.5	51	51	60	75
Capacity Hex	33	33	44	44	52	65
Capacity Square	29	29	36	36	42	53
A	116	116	142	142	168	210
B	135	170	170	220	220	220
C	118.5	118.5	146.5	146.5	160	198.5
D	25	25	30	30	30	30
E	82.58	106.4	106.4	139.7	139.7	139.7
F	M58 x 1.5	M58 x 1.5	M76 x 1.5	M76 x 1.5	M90 x 2.0	M100 x 2.0
G	19-28	19-29	24-34	24-34	27-37	46-58
H	15	15	15	15	20	25
J	65	65	83	83	96	106
L	80	80	80	80	110	110
Maximum RPM	6000	6000	5000	4500	4500	4000
Drawbar Force (kN)	28	28	38	38	38	44
Clamping Force (kg)	5987	5987	10070	10070	10070	11657
Approx. Chuck Weight	8kg	9kg	13kg	14kg	22kg	34kg

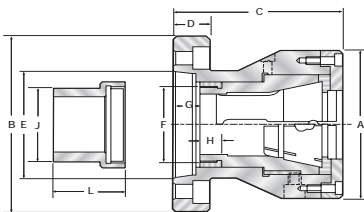
DIN 6353 Mounts			
CDC-28	CDC-42	CDC-54	CDC-66
J156	J491	J492	J493
82 x 6	140 x 6	170 x 6	220 x 6
T980	W850	V120	T285
28	42	54	66
25	38	51	57
19	31	41	44
P288	M286	N853	K244
25.4	38.5	51	60
22	33	44	52
18	29	36	42
86	116	142	168
122	160	200	250
75	118.5	146.5	160
15	25	30	35
82	140	170	220
M35 x 1.5 ^(Fem)	M58 x 1.5	M76 x 1.5	M90 x 2
Refer to DO	13-22	18-28	21-31
"	15	15	20
"	65	83	96
"	80	80	115
6000	6000	4500	4000
28	28	38	38
5987	5987	10070	10070
5kg	8.6kg	13kg	22kg

Standard Length CDC Collet Chucks

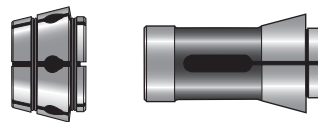
Dead length operation for
DIN standard Multibore, DIN type
Spring Collets & A type mounts



- Uses DIN type Multibore collets for a powerful parallel grip over a wide diameter range. When gripping short components, or where marking of a finished diameter is to be avoided, use DIN type spring collets with a dedicated bore size.
- Large Capacity: up to 80mm round
- Accuracy guaranteed to .005mm TIR from rear mounting register and working collet taper
- Hardened and ground main body and cone
- Speeds up to 6000 rpm
- Also available in DIN 6353 straight recess mountings



Drawtube Adapter

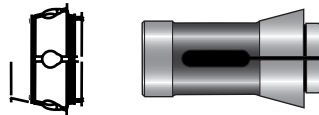


Multibore Collet

B type Spring Collet

Chuck Type (DIN)	CDC-42	CDC-42	CDC-60	CDC-60	CDC-80
Chuck Model No.	J495	J496	J475	J498	J834
Mount	A2-5	A2-6	A2-6	A2-8	A2-8
DIN Multibore Collet	M673	M673	M677	M677	J660
Capacity, Round	42	42	60	60	80
Capacity Hex	36	36	52	52	69
Capacity Square	29	29	42	42	56
Spring Collet	4728 (173E)	4728 (173E)	4291 (185E)	4291 (185E)	H047 (193E)
Capacity Round	42	42	60	60	80
Capacity Hex	38	38	52	52	69
Capacity Square	30	30	42	42	56
A	116	116	142	142	210
B	135	170	170	170	220
C	118.5	118.5	146.5	146.5	198.5
D	25	25	30	30	30
E	82.58	106.4	106.4	139.7	139.7
F	M58 x 1.5	M58 x 1.5	M76 x 1.5	M76 x 1.5	M100 x 2.0
G	19-28	19-29	24-34	24-34	46-58
H	15	15	15	15	25
J	65	65	83	83	106
L	80	80	80	80	110
Maximum RPM	6000	6000	5000	4500	4000
Drawbar Force (kN)	24	24	38	38	44
Clamping Force (kg)	5987	5987	10070	10070	11657
Aprox. Chuck Weight	8.6kg	9kg	13kg	13kg	34kg

DIN 6353 Mounts	
CDC-42	CDC-60
J499	J500
140 x 6	170 x 6
M673	M677
42	60
36	52
29	42
4728 (173E)	4291 (185E)
42	60
38	52
30	42
116	142
160	200
118.5	146.5
25	30
140	170
M58 x 1.5	M76 x 1.5
13-22	18-28
15	15
65	83
80	80
6000	5000
28	38
5987	10070
8.6kg	13kg



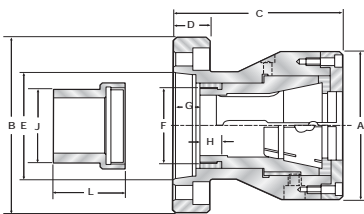
Multibore
Collet

Extended Length CDC Collet Chucks

Dead length operation using DIN standard Multibore and DIN Spring Collets with A type mount



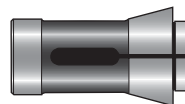
- For use on CNC machines where the drawtube protrudes from the spindle nose.
- Uses Crawford Multibore collets for a powerful parallel grip over a wide diameter range.
- When gripping short components, or where marking of a finished diameter is to be avoided, use a spring collet with a dedicated bore size.
- Capacity: up to 42mm diameter.
- Accuracy guaranteed to .005mm TIR from rear mounting register and working collet taper.
- Hardened and ground main body and cone.



Drawtube Adapter



Multibore Collet



B type Spring Collet

Chuck Type	QCD-42
Chuck Model No.	G497
Mount	A2-5
Std Multibore Collet	M673
Capacity, Round	42
Capacity Hex	36
Capacity Square	29
Spring Collet	4728 (173E)
Capacity Round	42
Capacity Hex	38
Capacity Square	30
A	116
B	135
C	145
D	25
E	82.58
F	M58 x 1.5
G	46-55
H	15
J	65
L	80
Maximum RPM	6000
Drawbar Force (kN)	24
Clamping Force (kg)	5987
Approx. Chuck Weight	10.6kg