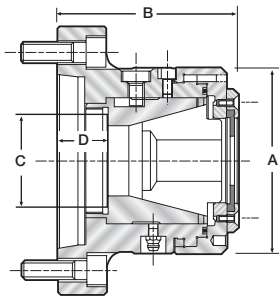


Short Quick Change Collet Chucks

Dead length operation for Crawford or DIN Multibore Collets and A type mounts



- Short body design, ideal for bar work with limited working envelope
- Quick change bayonet cap design saves setup time
- Models available for both Crawford and DIN type Multibore collets
- Large capacity: up to 80mm round
- Accuracy guaranteed to .005mm TIR from rear mounting register and working collet taper
- Hardened and ground main body and cone
- Speeds up to 6000 rpm
- A type spindle mountings



Multibore Collet

Chuck Type	For Standard Multibore Collets					
	QCS-42	QCS-42	QCS-54	QCS-54	QCS-66	QCS-80
Chuck Model No.	D603	D428	D604	D605	D606	D548
Mount	A2-5	A2-6	A2-6	A2-8	A2-8	A2-8
Multibore Collet	W-850	W-850	V-120	V-120	T-285	N-175
Capacity Round	42	42	54	54	66	80
Capacity Hex	38	38	51	51	57	69
Capacity Square	31	31	41	41	44	56
A	114	114	146	146	166	205
B	110	110	140	140	155	170
C	60	60	70	70	88	88
D	31	31	48	48	48	58
E	9	9	10	10	10	12
Maximum RPM	6000	6000	6000	4500	4500	4000
Drawbar Force (kN)	24	24	38	38	38	44
Clamping Force (kg)	5987	5987	10070	10070	10070	11657
Approx. Chuck Weight	6.8kg	7kg	10kg	14kg	17.7kg	25kg
Chuck Seal Part No. ¹	D237	D237	D485	D485	D619	D548
Chuck Cap Part No. ²	C68GA	C68GA	C983GA	C983GA	C556GA	C492GA

For DIN Multibore Collets			
QCSD-42	QCSD-42	QCSD-60	QCSD-60
D607	D608	D609	D610
A2-5	A2-6	A2-6	A2-8
M673	M673	M677	M677
42	42	60	60
36	36	52	52
29	29	42	42
114	114	146	146
110	110	136	136
60	60	70	70
31	31	48	48
9	9	10	10
6000	6000	6000	4500
24	24	38	38
5987	5987	10070	10070
6.8kg	7kg	10kg	14kg
D237	D237	D485	D485
C428GA	C428GA	C142GA	C142GA

¹ Each collet size requires a polyurethane chip Chuck Seal.

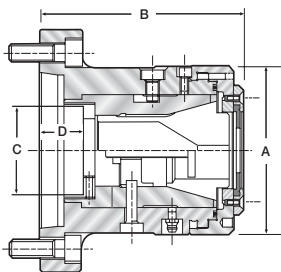
² Additional Quick Change Chuck Caps can be ordered for pre-loading collets and further reducing downtime.

Standard Quick Change Collet Chucks

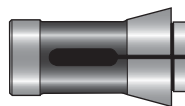
Dead length operation for Crawford Multibore Collets and Spring Collets with A type or DIN 6353 mounts



- Standard body design, ideal for both bar and secondary operations
- Quick change bayonet cap design saves setup time
- Models available for both Crawford and DIN type Multibore collets
- When gripping short components, or where marking of a finished diameter is to be avoided, use spring collets with a dedicated bore size
- Large capacity: up to 80mm round
- Accuracy guaranteed to .005mm TIR from rear mounting register and working collet taper
- Hardened and ground main body and cone
- Speeds up to 6000 rpm
- A type spindle and recess mountings



Multibore Collet



Spring Collet

For Standard Multibore Collets						
Chuck Type	QC-42	QC-42	QC-54	QC-54	QC-66	QC-80
Chuck Model No.	D226	D227	D474	D476	D602	D519
Mount	A2-5	A2-6	A2-6	A2-8	A2-8	A2-8
Multibore Collet	W-850	W-850	V-120	V-120	T-285	N-175
Capacity Round	42	42	54	54	66	80
Capacity Hex	38	38	51	51	57	69
Capacity Square	31	31	41	41	44	56
Spring Collet	M286	M286	N853	N853	K244	L196
Capacity Round	38.5	38.5	51	51	60	75
Capacity Hex	33	33	44	44	52	65
Capacity Square	29	29	36	36	42	53
A	114	114	146	146	166	205
B	147	147	193	193	196	230
C	60	60	70	70	88	88
D	31	31	48	48	48	58
E	9	9	10	10	10	12
Maximum RPM	6000	6000	6000	4500	4500	4000
Drawbar Force (kN)	24	24	38	38	38	44
Clamping Force (kg)	5987	5987	10070	10070	10070	11657
Approx. Chuck Weight	8.6kg	9kg	13kg	14kg	22kg	34kg
Chuck Seal Part No.1	D237	D237	D485	D485	D619	D527
Chuck Cap Part No.2	C68GA	C68GA	C983GA	C983GA	C556GA	C492GA

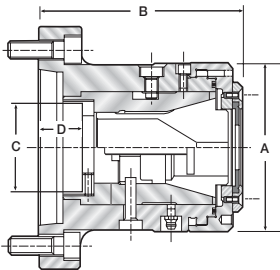
DIN 6353 Mounts			
QC-28	QC-42	QC-54	QC-66
D632	D633	D635	D637
82 x 6	140 x 6	170 x 6	220 x 6
T980	W850	V120	T285
28	42	54	66
25	38	51	57
19	31	41	44
P288	M286	N853	K244
25.4	38.5	51	60
22	33	44	52
18	29	36	42
95	114	142	168
100	147	200	250
40	60	146.5	160
21	31	30	35
9	9	170	220
6000	6000	4500	4000
18	24	38	38
4490	5987	10070	10070
5kg	8.6kg	14kg	22kg

Standard Quick Change Collet Chucks

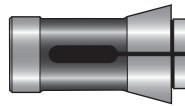
Dead length operation for DIN standard
Multibore, DIN type spring collets with
A type and recess mounts



- Quick change bayonet cap design saves setup time
- Uses DIN type Multibore Collets for a powerful parallel grip over a wide diameter range. When gripping short components or where marking of a finished diameter is to be avoided, use the DIN type spring collets with a dedicated bore size collet
- Large capacity: up to 60mm round
- Accuracy guaranteed to .005mm TIR from rear mounting register and working collet taper
- Hardened and ground main body and cone
- Speeds up to 6000 rpm
- Also available in DIN 6353 mountings



Multibore
Collet



B type
Spring Collet

Chuck type	QCD-42	QCD-42	QCD-60	QCD-60
Chuck Model No.	D233	D234	D475	D477
Mount	A2-5	A2-6	A2-6	A2-8
Multibore Collet	M-673	M-673	M-677	M-677
Capacity Round	42	42	60	60
Capacity Hex	36	36	52	52
Capacity Square	29	29	42	42
Spring Collet	4728 (173E)	4728 (173E)	4291 (185E)	4291 (185E)
Capacity Round	42	42	60	60
Capacity Hex	38	38	52	52
Capacity Square	30	30	42	42
A	114	114	146	146
B	147	147	191	191
C	60	60	70	70
D	31	31	48	48
E	9	9	10	10
Maximum RPM	6000	6000	6000	4500
Drawbar Force (kN)	24	24	38	38
Clamping Force (kg)	5987	5987	10070	10070
Approx. Chuck Weight	8.6kg	9kg	13kg	14kg
Chuck Seal Part No.2	D237	D237	D485	D485
Chuck Cap Part No.3	C428GA	C428GA	C142GA	C142GA

DIN 6353 Mounts	
QCD-42	QCD-60
D634	D636
140 x 6	170 x 6
M673	M677
42	60
36	52
29	42
4728 (173E)	4291 (185E)
42	60
38	52
30	42
114	146
147	191
60	60
31	48
9	10
6000	4500
24	38
5987	10070
8.6kg	14kg
D237	D485
C428GA	C142GA